



S-Thunder Gas Landmine

Instruction Manual

Thank you for purchasing S-Thunder's Gas Landmine. This Gas Landmine is superbly designed and engineered by S-Thunder, and you will enjoy its use for many years to come. Before using the Gas Landmine please read the following warnings and operating instructions.

WARNING

This Gas Landmine is not a toy and is not intended for use by any persons under the age of 18 years.

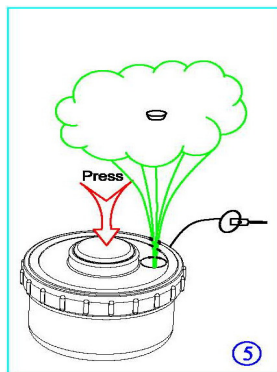
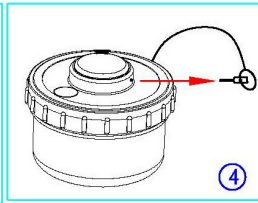
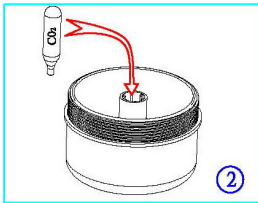
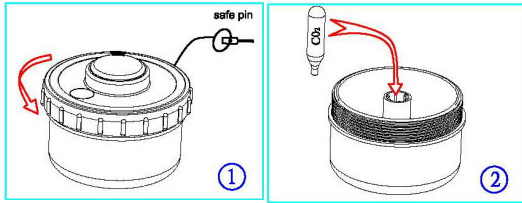


WARNINGS:

- Persons under the age of 18 should not handle or operate the Gas Landmine nor the gas cylinder
- Failure to follow the instructions herein may result in serious injuries or property damage
- Only authorized technicians can repair the Gas Landmine; do not disassemble the Gas Landmine or attempt to modify the Gas Landmine in any way. Serious injuries may occur with modified units
- Wear protective mask and equipment at all times while operating this Gas Landmine to avoid face or eyes injury
- Seek immediate medical attention if you or anyone is injured by the Gas Landmine or its projectiles

OPERATING INSTRUCTIONS

- Remove safety pin and unscrew top cap (1)
- Place CO₂ Cartridge in the centre column of the Gas Landmine (2)
- Remove plug and fill with powder (3)
- Replace safety pin until ready for use (4)
- Gas Landmine will eject powder when stepped on with safety pin removed (5)



REPLACEMENT PARTS AVAILABLE:

- Condensed gas cylinder replacement, part # TGC-X004
- Colored powder, part #
 - Set of three single charges (purple, yellow & blue) – ACC-CP01
 - Large size multiple charges (purple) – ACC-PD02P
 - Large size multiple charges (yellow) – ACC-PD02Y
 - Large size multiple charges (blue) – ACC-PD02B

S-Thunder Limited

www.s-thunder.com

info@s-thunder.com